

CM5200 Ellapsed time indicators

Application

Ellapsedtime indicator for severe environments : humidity, corrosion, shock and vibrations, extreme temperatures...

- operating temperature : -55 ... +125 °C
- Precision : ± 1%
- Registering capacity : 999.9 hours on standard or 9999 hours (with H letter at the end of the Part Number).

Description

Waterproof ellapsed time indicator without zero return.

- Metallic box with black flat paint finish.
- Intern mechanism in neutral atmosphere.
- Front mounting.
- Connection : Solder terminals (for 0.75 mm² cable max.).

Approval and Compliance to Standards

Qualifications tests for Standards : MIL-STD-202, MIL-M-7793, NF C 42-310, NF C 20-700.

Electrical characteristics

Ellapsed time indicator	CM52xx
Consumption under Un	100 mW Maxi.
Dielectric strength (50Hz - 1mn)	
- between all terminals and earth (ground) V a.c.	500
Insulation resistance	mΩ
Voltage	Vdc
	≥ 1000 mΩ under 500 Vdc (at 23 °C with < 80% relative humidity)
	10 ... 34 Vdc

Environmental characteristics

(For other test results, please contact us)

Salt spray resistance	96 hours
Humidity	93% relative humidity, +40 °C duration 1344 hours (56 days)
Mechanical shocks resistance	100 g - duration 6 ms 18 shocks (3 / direction, both of 3 orthogonal axis)
Sinusoidal vibrations	10 _ 2000 Hz, 10 g in each of 3 orthogonal axis
Vibrations	40 g - duration 6 ms 6000 vibrations (1000 / direction, both of 3 orthogonal axis)

Ordering details

Mounting type (1) et (2)	P/N	Weight (1 piece) kg
Front mounting; hole Ø 3.2	CM5200	0.017
"Empty" box	CM5203	0.013
Horizontal mounting lug; hole Ø 3.2	CM5204	0.015
Horizontal mounting lug; 4.40 NC 2B screws	CM5204T	0.015
Mounting on partition; cutout Ø 19.5	CM5205	0.036
Vertical mounting lug; hole Ø 3.2	CM5207	0.015
Vertical mounting lug; 4.40 NC 2B screws	CM5207T	0.015

Nota :

- Add H letter at the end of the Part Number for a 9999 hours registrer product . Ex : CM5200H



(1) Sealing part supplied when applicable

(2) Position of mounting lug X = 1.6 mm on standard.

CM5200 Ellapsed time indicators



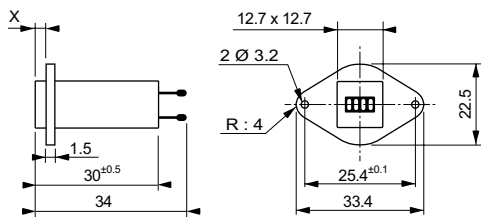
Ordering details - Accessories

Accessories	P/N	Weight (1 piece) kg
Mounting clip for CM5203	BR001	0.005
Sealing part (spare part) for CM5200	JT001	-

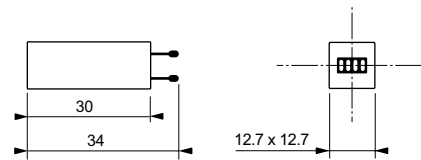
- Products in packs of 10.

Dimensions

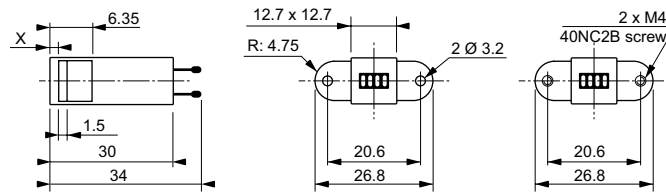
X = Standard 1.6 mm (other value depending on order, with pitch of 0.8), 20mm maxi..



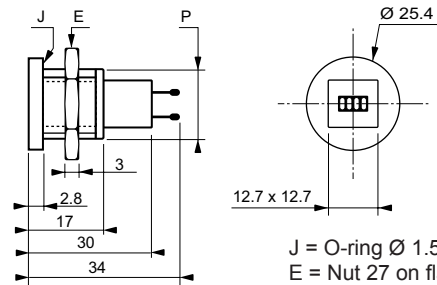
CM5200



CM5203



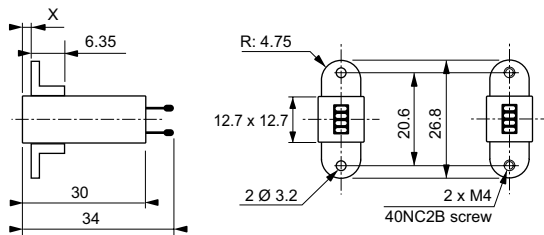
CM5204 / CM5204T



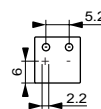
CM5205 -

Tightening torque : 5 Nm

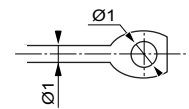
J = O-ring Ø 1.5 on Ø 2.05
E = Nut 27 on flat side
P = Ø 19 pitch 0.5



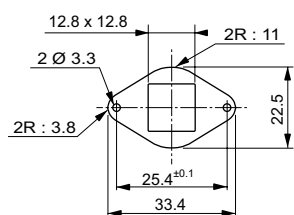
CM5207 / CM5207T



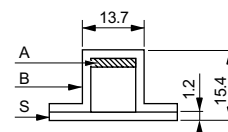
Back



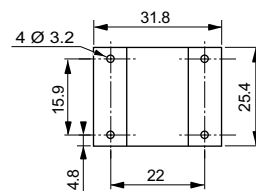
Mounting lug



Sealing part JT001



A = Damper
B = Mounting clip
S = Base plate



Mounting clip BR001